



AMFW40FT-JZ



Picture Coming Soon

Encapsulated

Aimtec's AMFW40FT-JZ series are designed to improve the system performance against the DC power interference. They are ideal for noise sensitive applications and can improve the EMS performance of DC-DC converters to $\pm 4\text{KV}$, IEC/EN61000-4-4 standard and reduce the ripple & noise at the DC-DC output.

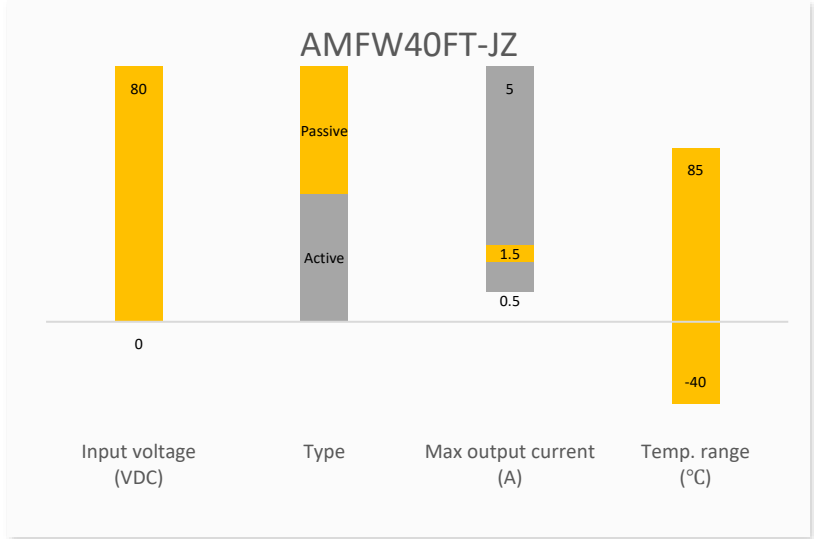
With an input voltage range of 0-80VDC and operating temperature of -40to +85°C this cost-effective design offers an easy plug and play solution to achieve simple EFT compliance.

Features

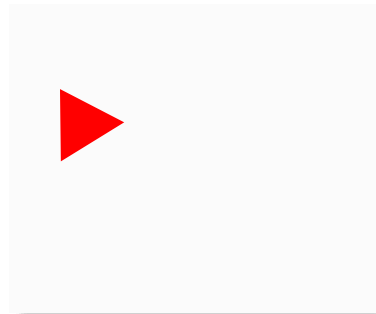


- Wide Input: 0 - 80VDC
- Operating Temp: -40 °C to +85 °C
- EFT Attenuation: 30dB@2.5KHz / 5KHz / 100KHz / 1MHz
- Compact Size

Summary



Training



Product Training Video
(click to open)

Press Release

Coming Soon!

Application Notes

Applications



Power Grid



Industrial



Telecom



Instrumentation

Models & Specifications

Models

Model	Input Voltage (VDC)	Max Current (A)	EFT Level (IEC/EN61000-4-4)
AMFW40FT-1.5JZ	0 ~ 80	1.5	±4KV

EFT Suppression Specifications

Parameters	Tested Conditions	Typical	Maximum	Units
Attenuation multiples	2.5KHz / 5KHz / 100KHz / 1MHz	30		dB

General Specifications

Parameters	Conditions	Typical	Maximum	Units
Operating temperature		-40 to +85		°C
Storage temperature		-55 to +125		°C
D.C.R		160		mΩ
Case temperature rise		15		°C
Case material	Heat resistant black Plastic (flammability to UL 94V-0)			
Weight		20		g
Dimensions (L x W x H)		1.33 x 0.87 x 0.71 inches (33.70 x 22.20 x 18.00mm)		

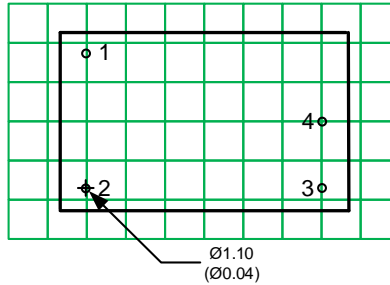
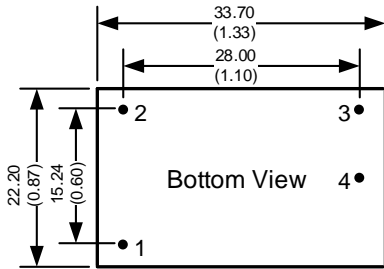
NOTE: All specifications in this datasheet are measured at an ambient temperature of 25°C, humidity<75%, nominal input voltage and at rated output load unless otherwise specified.

Safety Specifications

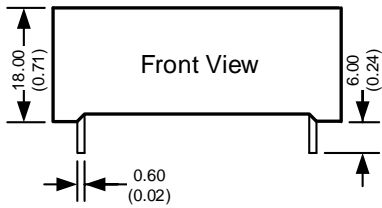
Parameters

Standards	AMFW40FT-1.5JZ can ensure Aimtec DC/DC converter module meet EFT level of IEC/EN 61000-4-4 ±4KV.
-----------	--------------------------------------------------------------------------------------------------

Dimensions

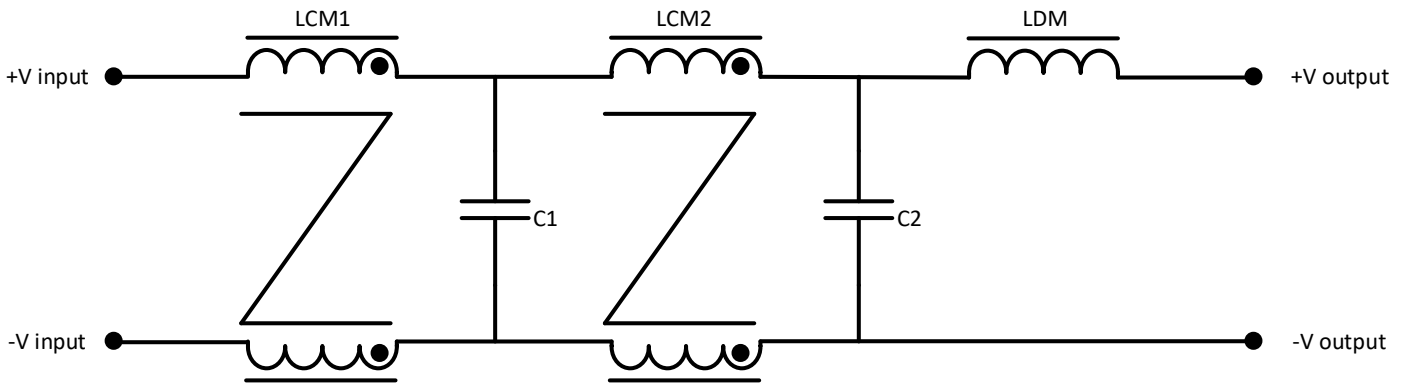


Pin Output Specifications	
Pin	Single
1	+V Input
2	-V Input
3	-V Output
4	+V Output

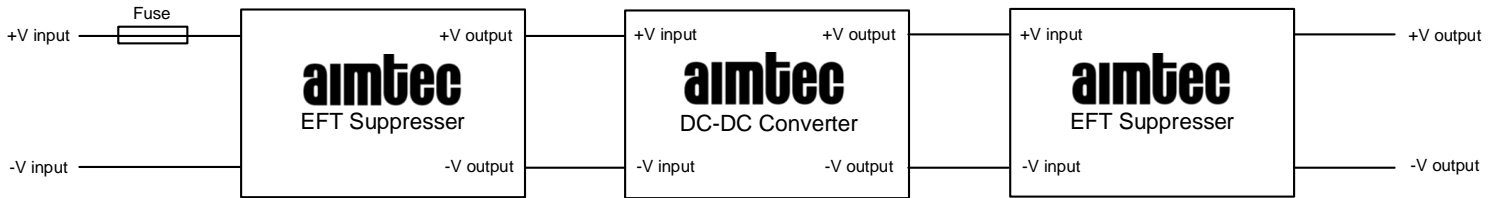


Dimensions mm (inch).
Pin diameter tolerance ± 0.1 (± 0.004)
Pin height tolerance ± 0.5 (± 0.02)

Internal Schematic



Application Circuit



- Note:**
- 1. Fuse :** Due to the difference of the power module input current, the fuse of the recommended values, please refer to the Technical Manual of the power module.
 - 2. AMFW40FT-1.5JZ :** Add based on the actual apply.

NOTE: 1. Datasheets are updated as needed and as such, specifications are subject to change without notice. Once printed or downloaded, datasheets are no longer controlled by Aimtec; refer to www.aimtec.com for the most current product specifications. 2. Product labels shown, including safety agency certifications on labels, may vary based on the date manufactured. 3. Mechanical drawings and specifications are for reference only. 4. All specifications are measured at an ambient temperature of 25°C, humidity < 75%, nominal input voltage and at rated output load unless otherwise specified. 5. Aimtec may not have conducted destructive testing or chemical analysis on all internal components and chemicals at the time of publishing this document. CAS numbers and other limited information are considered proprietary and may not be available for release. 6. This product is not designed for use in critical life support systems, equipment used in hazardous environments, nuclear control systems or other such applications which necessitate specific safety and regulatory standards other than the ones listed in this datasheet. 7. Warranty is in accordance with Aimtec's standard Terms of Sale available at www.aimtec.com.