

Hot Swap Circuit

The circuit shown in Figure 1 is an illustration of a circuit that provides protection to the DC/DC converter during a hot swap or hot plug in.

Additionally protection for negative surge protection is provided by D1.

Resistors R1 and R2 form a voltage divider dropping the +24V input, while the zener diode D2 clamps the voltage to 2.4V to bias the MOSFET Q1.

When the converter is connected to the circuit the delay caused by Q1 in the ground prevents any surge current at the converter's input.

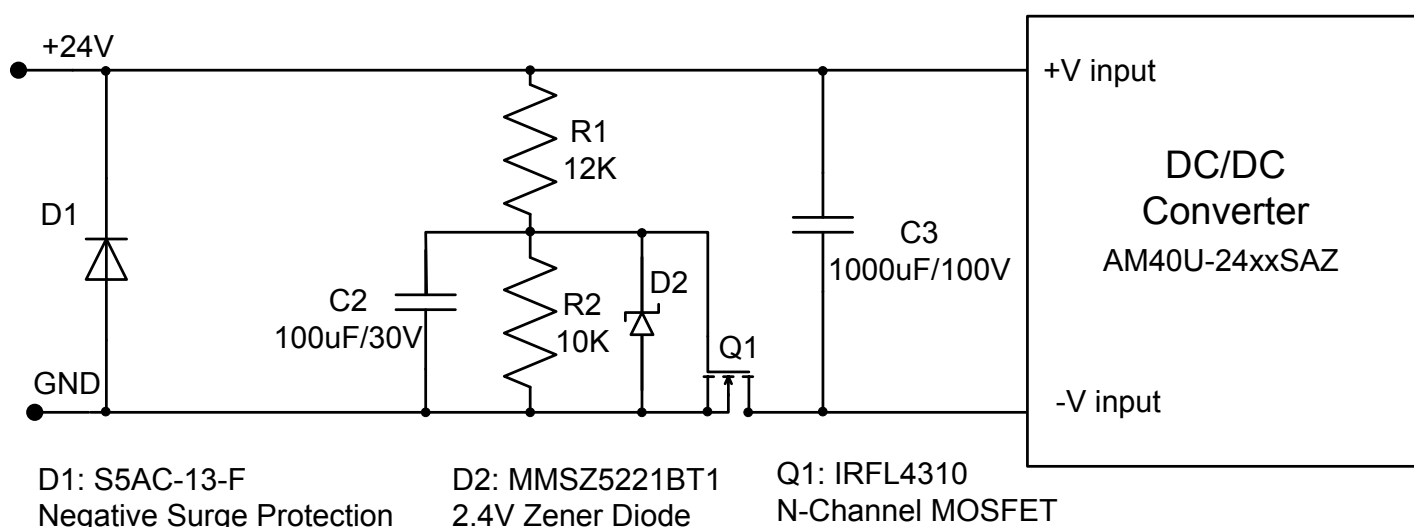


Figure 1

Notes: Information furnished is believed to be accurate and reliable. However, Aimtec Inc. assumes no responsibility for the consequences of use of such information nor for any infringement of patents or other rights of third parties which may result from its use. No license is granted by implication or otherwise under any patent or patent rights of Aimtec Inc. Specifications mentioned in this publication are subject to change without notice. This publication supersedes and replaces all information previously supplied. Aimtec Inc. Products are not authorized for use as critical components in life support devices or systems without express written approval of Aimtec Inc. © 2006 Aimtec Inc. – All Rights Reserved